

## **ALU LIKE, Inc.**

### **Island Office Locations:**

#### **O'AHU**

Hale O Na Limahana  
2969 Mapunapuna Place, Suite 200  
Honolulu, Hawai'i 96819  
Telephone: (808) 535-6700  
Fax: (808) 524-3744

#### **HAWAI'I**

32 Kinoole Street, Suite 102  
Hilo, Hawai'i 96720  
Telephone: (808) 961-2625  
Fax: (808) 935-6084

#### **KAUA'I**

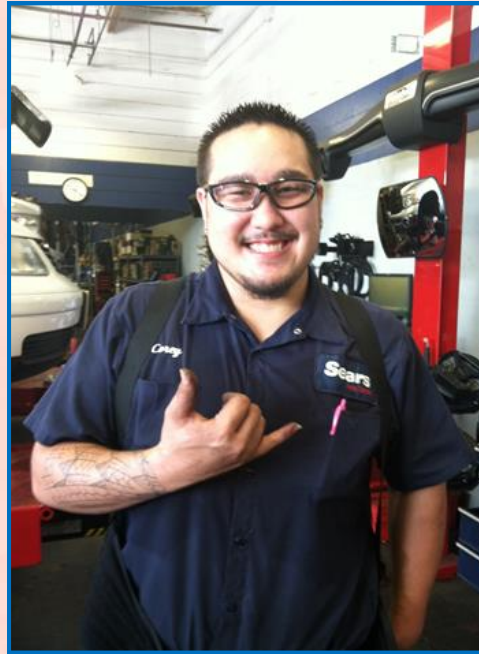
Lihue Plantation Building  
2970 Kele Street, Suite 116  
Lihue, Hawai'i 96766  
Telephone: (808) 245-8545  
Fax: (808) 245-1720

#### **MAUI**

737 Lower Main Street, Suite B-2  
Wailuku, Hawai'i 96793  
Telephone: (808) 242-9774  
Fax: (808) 244-7880

#### **MOLOKA'I**

10 Mohala Street  
Kaunakakai, Hawai'i 96748  
Telephone: (808) 553-5393



### **Our Mission**

*To kōkua Native Hawaiians who are committed to achieving their potential for themselves, their families and communities.*

### **ALU LIKE, Inc.'s**

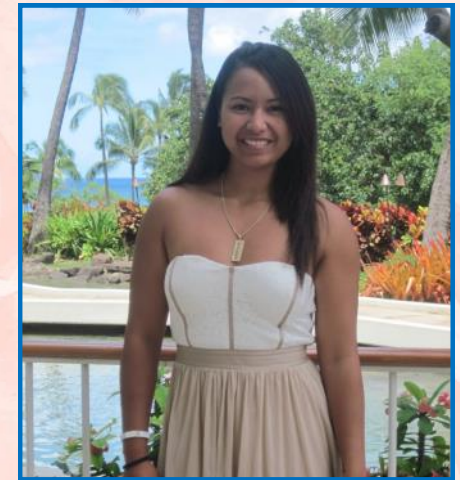
Employment and Training Program is funded through the U.S. Department of Labor, Division of Indian and Native American Programs (DINAP),

Workforce Innovation and Opportunity Act, Title I, Subtitle D, Sec. 166

Rev. 5/2016



2969 Mapunapuna Place, Suite 200  
Honolulu, Hawai'i 96819  
[www.alulike.org](http://www.alulike.org)



## **Employment and Training Program**

**Ho'omānea 'Ōiwi**  
*Strengthening One's Foundation*

**Year Round Supplemental Youth Services**  
**Workforce Innovation and Opportunity Act**



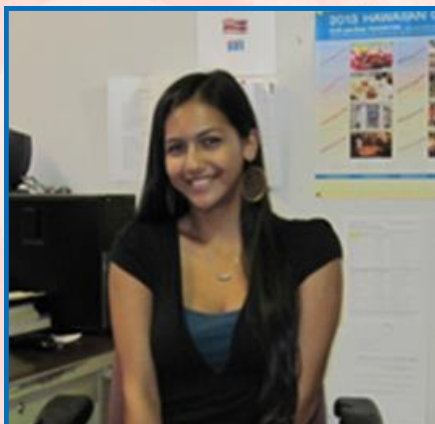
### **Our History**

ALU LIKE, Inc. is a private, nonprofit community-based organization whose mission is "to kōkua Native Hawaiians who are committed to achieving their potential for themselves, their families and communities."

### **Our Objective**

The Ho`omānea `Ōiwi Department provides statewide & year round employment & training services for eligible Native Hawaiians, American Indians and Alaska Natives in order to:

- Develop more fully their academic, occupational & literacy skills.
- Facilitate their competitiveness in the workforce and equip them with entrepreneurial skills necessary for successful self-employment.
- Promote the economic and social development of their communities according to their cultural goals & values.
- Achieve personal and economic self-sufficiency.



### **Eligibility**

Based on Workforce Innovation & Opportunity Act (WIOA) requirements, applicants must be:

- Native Hawaiian, American Indian or Alaska Native (verification of ethnicity required)
- 14-24 years old
- A low-income individual
- Selective Service verification (all males age 18-25)
- **1<sup>st</sup> Priority – Veterans & Eligible Spouses of Veterans**



### **Year Round Services for Youth:**

- Tutoring, study skills training that lead to completing requirements for secondary school diploma or its recognized equivalent or recognized post-secondary credential.
- Paid and unpaid work experiences that have as a component academic and occupational education, i.e. summer employment and other employment opportunities available during school year; pre-apprenticeship programs; internships and job shadowing; on –the-job training; and occupational skill training that must include training programs that lead to recognized post-secondary credentials aligned with in-demand local area occupations.
- Leadership development opportunities.
- Financial literacy education.
- Entrepreneurial skills training.